



HOMELESS CHILDREN'S BROKERAGE

STATEWIDE CHILDREN'S RESOURCE PROGRAM

What is the Homeless Children's Brokerage Program?



The Statewide Children's Resource Program (SCRCP) has brokerage available to support children who have experienced homelessness and family violence. The brokerage is able to fund up to \$400 per child, per financial year.

The program aims to improve service delivery for children in the homelessness and family violence sector.

The program aims to raise awareness of the issues facing children and young people experiencing homelessness and/or family violence.

Please note that brokerage applications can only be made by practitioners supporting eligible families. Practitioners are invited to contact their local SCRCP Coordinator

What can the brokerage be used for?

The purpose of the brokerage is to support infants, children and young people to engage and maintain education, reduce social isolation, or provide social and emotional growth opportunities.

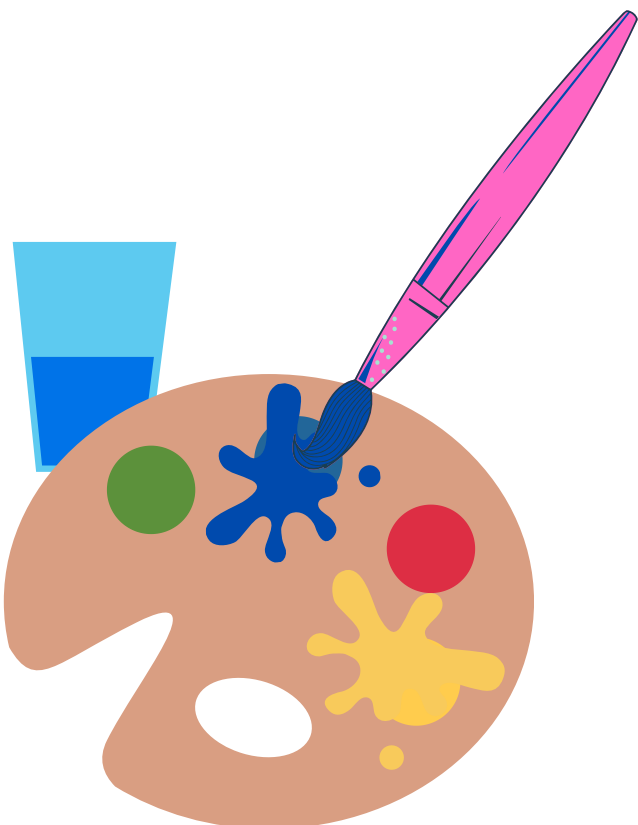
This brokerage is able to fund items such as activities for infants and toddlers, school engagement materials and fees, vacation care, and specialist medical or psychological assessments.

Practitioners are required to consult with the children and/or their caregiver to identify ways in which they should be supported.



What is the eligibility criteria?

- Accompanying dependent children (0-18 years) engaged in case management of Specialist Homelessness Support services are able to access the brokerage.
- The child has been assessed and has a case plan developed by the referring support agency.
- The child has an identified need for brokerage as demonstrated by their case plan.
- The child requires support to engage and/or maintain their education, or require support to access social, recreational, health or support opportunities in their community.
- Other forms of brokerage are not able to be accessed or only covers part payment.



Statewide Children's Resource Coordinator Contacts



Hume, Moreland & North Eastern
Melbourne -
03 9359 5493

Brimbank Melton & Western
Melbourne -
03 9359 5493

Goulburn Ovens Murray Areas -
02 6043 7404 / 0458 010 923

Loddon and Mallee Areas -
0407 839 708

Inner/Outer Eastern Melbourne -
03 8870 4042

Inner/Outer Gippsland Areas -
03 5144 7777

Central Highlands & Wimmera
South West Areas -
0409 425 962

Barwon & Wimmera South West
Areas -
03 5232 5231

Southern Melbourne & Bayside
Peninsula Areas -
0419874365